

Homay Syringe Filter

Homay Syringe Filters are high quality filters, well packaged, and offered at a competitive price. The classic range is available with membranes including Nylon, PTFE, PES, MCE and PVDF, which are supplied in 13mm, 25mm formats in virgin medical polypropylene housings

BENEFITS

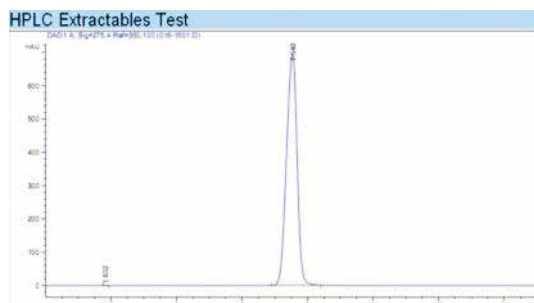
- Application compatibility: broad range of filtration media meets diverse applications needs
- Minimum sample hold-up: syringe Filters housings are specifically designed to maximize sample recovery
- Convenient: each unit is clearly marked with an identifying code to denote pore size, membrane material
- Sterile: filters can be purchased pre-sterilized by Gamma radiation and individually packaged

APPLICATIONS

- | | |
|-----------------------------------|-------------------------|
| • HPLC sample preparation | • Dissolution testing |
| • Routine QC analysis | • Food analysis |
| • Content uniformity | • Biofuel analysis |
| • Removal of protein precipitates | • Environmental samples |

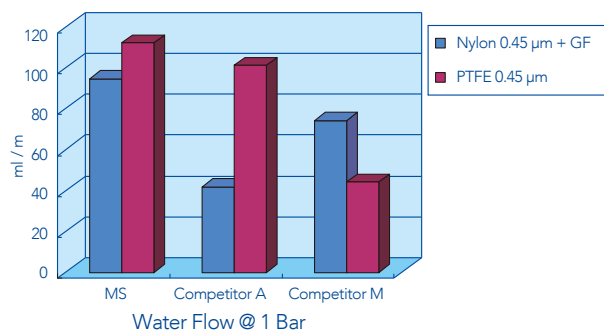
- HPLC certification which guarantees the filters will not produce extraneous peaks in the UV range.
- 100% integrity tested with higher burst strength ratings assuring they will perform consistently.
- Available in 13 and 25mm sizes and available in sterilized too.
- 0.45µm for most clarification applications and 0.22 µm when fine particulate removal is required. Other pore size are available in 0.8µm - 5µm.

VALIDATED HPLC PERFORMANCE

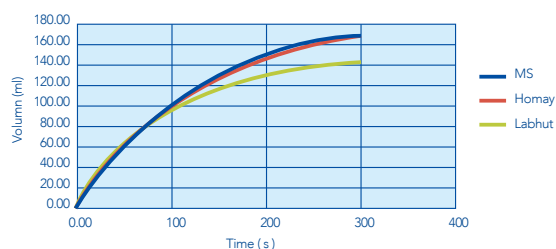


Agilent Technologies 1200,
Column: C18 UV-254 nm
Mob. phase: MeOH:H₂O:20:80,
Temperature: 25°C,
Flow rate: 0.8 ml/min,
sample: 2 mg/ml Bergenin (in Methanol)

HM 25mm Syringe Filter VS Competition



Nylon 0.45 + GF



ORDERING INFORMATION

A: How to order?

SF	NY	025	022	N	G
Syringe Filter	Filter Media	Diameter	Pore Size		
	Nylon PTFE PES CA PP CE	013 = 13 mm 025 = 25mm	022 = 0.2 µm 045 = 0.45 µm	N = non sterile S = sterile	G = GF prefilter P = PP prefilter

PARAMETERS	13mm	25mm
Housing material	Virgin Medical	Polypropylene
Effective Filtration area (cm ²)	1.0	4.08
Pore Size (µm)	0.22, 0.45,	
Holdup volume (µl)	<25	<100
Sample volume (ml)	<10	<100
Inlet connection	Female luer lock	
Outlet connection	Male luer slip	
Maximum Operating Temperature	50°C	50°C
Maximum Operating Pressure (bar)	6	6