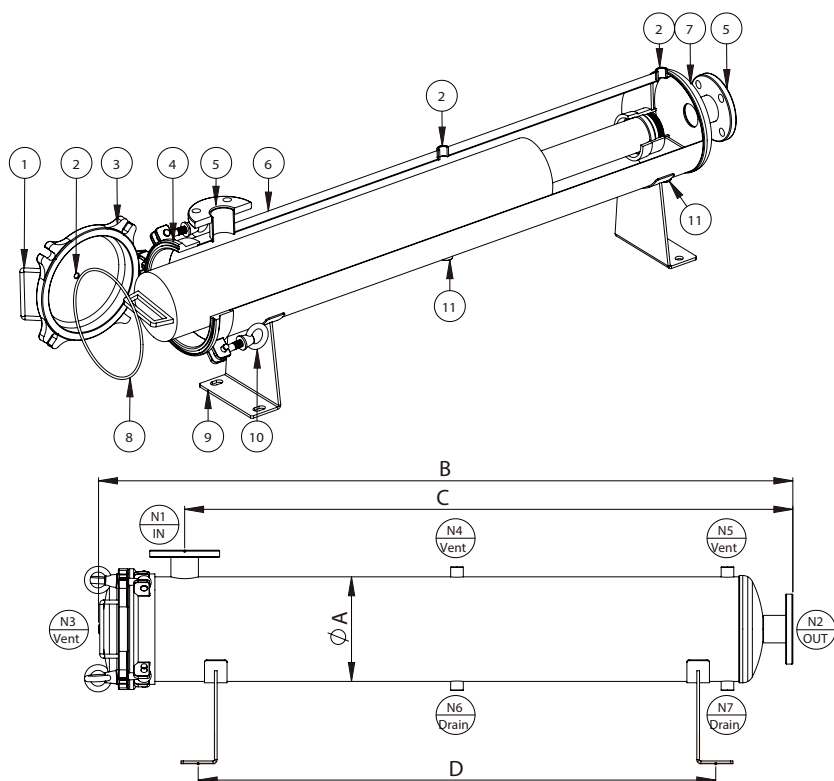


High Flow Filter Housings

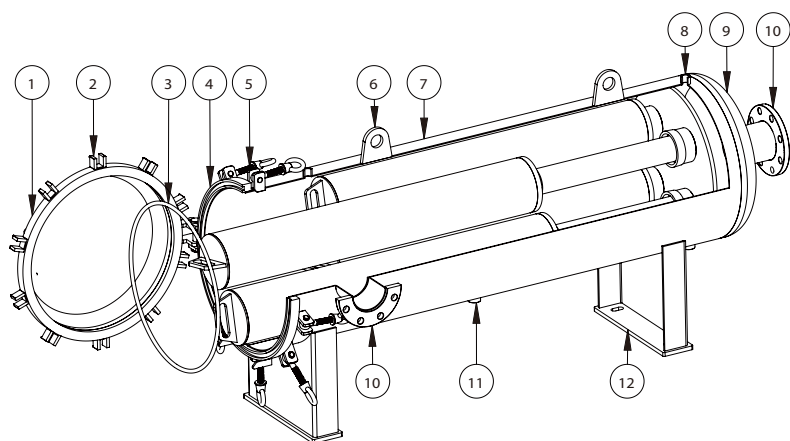
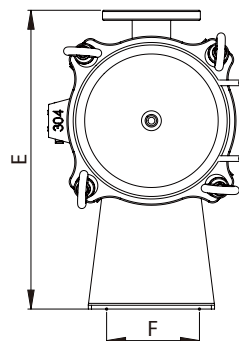
High Flow Filter Housings are designed for large diameter and high flow rate pipelines for high flow applications. The cartridges are high flow pleated filter cartridges which have much more surface area than the conventional cartridges. Its big pore ratio (as much as 50%) and straight-through type structure are suitable for high flow and low pressure drop. This reduces the size and weight of the filtration unit. Therefore, the cost of investment and operation cost is reduced. Furthermore, the frequency of the filter cartridge replacement is also reduced to save labor resources.

This High Flow Filter Housings have stand type and horizontal type. For big system with flow over 1000t/h, horizontal type housings are better and usually it contains the 60" cartridges.

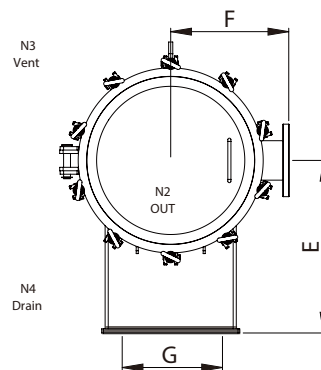
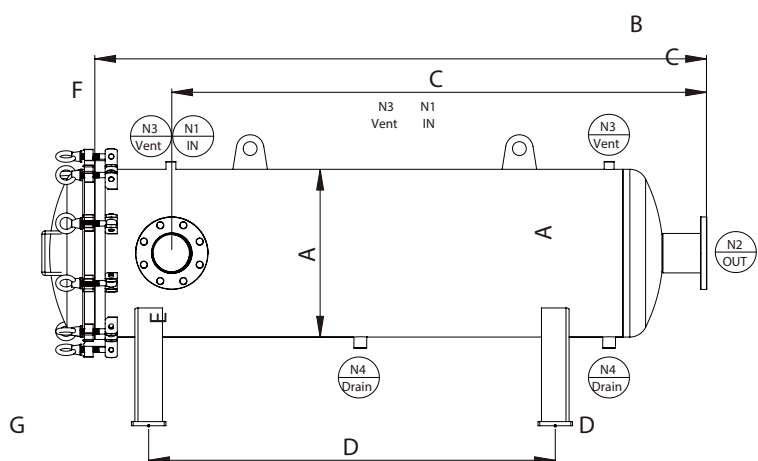




No.	Description
1	Handle
2	Vent
3	Top cover
4	Shell flange
5	Port(Outlet/Inlet)
6	Shell
7	Bottom cover
8	O-ring
9	Support leg
10	Eye bolt
11	Drain



No.	Description
1	Top cover flange
2	Top cover
3	O-ring
4	Shell flange
5	Eye bolt
6	Lifting lug
7	Shell
8	Vent
9	Bottom cover
10	Port(Outlet/Inlet)
11	Drain
12	Support leg



APPLICATIONS

- High flow liquid filtrations
- Big water treatment projects
- Sea water desalination
- Power plant water treatment
- RO prefiltration

BENEFITS

- High flow rate, less space needed, high efficiency
- SS 304 and SS 316L material with good corrosion resistance
- Stand type and horizontal type for choosing

PRODUCT SPECIFICATIONS

Body

SS 304, SS 316

Eyebolt

SS 304, SS 316

Feet

SS304

O-ring/Gasket

EPDM, PTFE, Viton, Silicone

CONNECTIONS

Body Connection

Flange

Inlet/ outlet N1、 N2

Flange,Quick install

Pressure Gage N3 (optional)

G3/4"Thread

Drain N4 (optional)

G1/2"Thread

SURFACE POLISHING

Polishing Type

Mechanical polishing
Electrolytic polishing

Polishing Precision

Inside 0.3μm
Outside 0.4μm

PERFORMANCE

Max Operation Pressure

0.6 MPa

Max Operation Temperature

50°C

Dimensions	1 Cartridge			2 Cartridge		
	20"	40"	60"	20"	40"	60"
A: Body length (except head)	700	1200	1700	800	1300	1800 1770
B: Center distance of the feet bolt	300	600	900	400	700	1000
C: Diameter	Φ230			Φ400		
D: Terrain clearance of inlet/outlet N1, N2	355			395		
inlet/outlet N1, N2	2"/2.5"/3"			3"/4"/5"		

ORDERING CODE

Example : HMHF-L-2R-40-F-B-4-E

HMHF	Structure Type	Cartridge QTY.	Cartridge Length	Inlet/outlet Connection	Surface Treatment
	L = Stand Type W = Horizontal Type	1R = 1 pcs 2R = 2 pcs 3R = 3 pcs 4R = 4 pcs 5R = 5 pcs	20 = 20" 40 = 40" 60 = 60"	F = Flange K = Quick Install L = Thread	A = Sand Blasting B = Mirror Polish C = Electrolytic Polish
Body Material		Seal Material			
4 = SS 304 6 = SS 316L		E = EPDM P = PTFE V = Viton S = Silicone			